



Facing reality

Description

Artificial intelligence (AI) is transforming how we work, but using it responsibly requires careful consideration of security, accuracy, and ethical practices.

AfroCentric Technologies recently hosted a webinar on how to use AI responsibly in light of the rapid advancement of tools that have revolutionised workplace productivity, offering unprecedented opportunities for creativity, efficiency, and inclusivity.

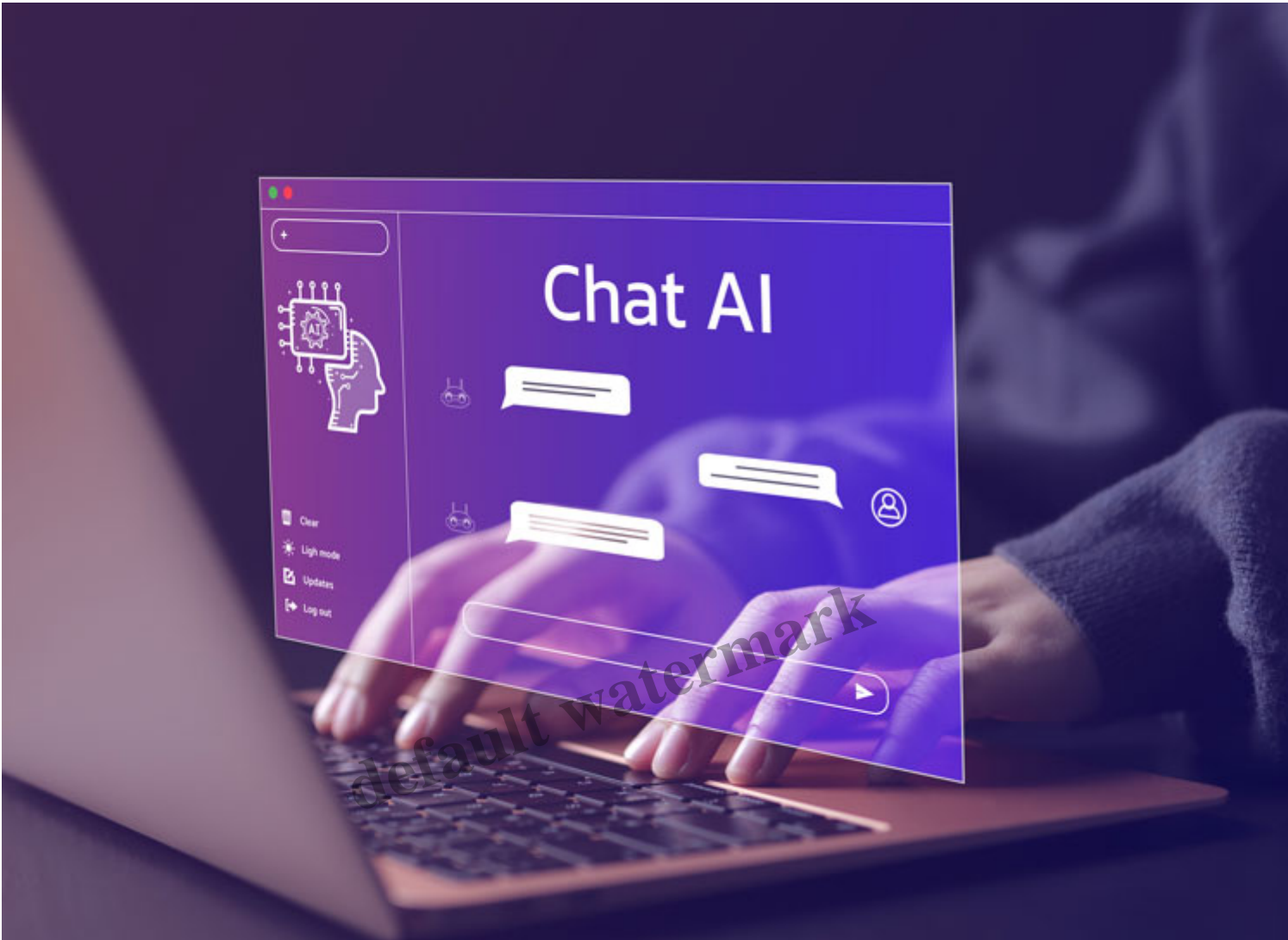
default watermark



AI is a tool

AI should be viewed as a sophisticated tool designed to assist with tasks, improve accessibility and enhance creative processes. It is not a replacement for human oversight or critical thinking. Every AI-generated output needs to be fact-checked and evaluated to ensure it is accurate, particularly in professional communications and decision-making processes.

The key is maintaining human authority over AI outputs. Whether drafting emails, creating content or analysing data, we must always verify information before acting on AI recommendations.



Protecting sensitive information

One of the most critical aspects of responsible AI use involves safeguarding sensitive data. Avoid inputting personal information, proprietary company data or confidential details into AI tools – especially free or unverified platforms – to prevent potential data breaches and protect our organisation's integrity.

When using AI to help in your day-to-day tasks, be sure to only use company-approved AI applications that have been vetted for security risks. Business-grade AI products typically offer stricter privacy controls and reduced exposure to external threats compared to free versions.



Six ways to use AI responsibly

1. Create verification habits: Establish a “pause-and-verify” culture where unusual requests or outputs are double-checked before acting.
2. Set clear boundaries: Use AI primarily for brainstorming and creative assistance rather than treating it as a single source of truth.
3. Promote transparency: Implement clear policies regarding AI use, including consequences for negligent practices.
4. Encourage questioning: Foster a workplace environment where employees feel comfortable

doubting and verifying AI output.

5. Invest in training: Organise regular awareness sessions to educate teams about AI capabilities, limitations and emerging risks.
6. Establish authentication systems: Create organisational code words or verification methods for critical communications.

By following these principles, we can harness AI's transformative potential while still maintaining security, accuracy and ethical standards.

Category

1. Our Knowledge Centre

default watermark