



How we are preparing for what lies ahead

Description

Through innovation, research and thought leadership, we're getting our business ready for a sustainable, successful future.

Measuring our carbon footprint

default watermark



By completing the Employee Travel Survey, you are contributing to the development and implementation of low-carbon growth strategies at AfroCentric.

Our group is committed to creating an environment that promotes sustainability through environmental and conservation awareness. Part of this entails completing Greenhouse Gas Inventory (carbon footprint) reports that inform our business decisions and their impact on climate change.

These reports include a component based on our employees' commute between home and work. This data is collected via the Employee Travel Survey. Accurate emissions calculations can only be made if

every employee completes the survey.

What to do

Access the Employee Travel Survey on SPP under the EH&S workspace or click [Employee Travel Survey – Overview \(medscheme.com\)](#).

Complete the survey before 30 June 2023.

All employees must complete the survey at least once.

Creating magic through information management

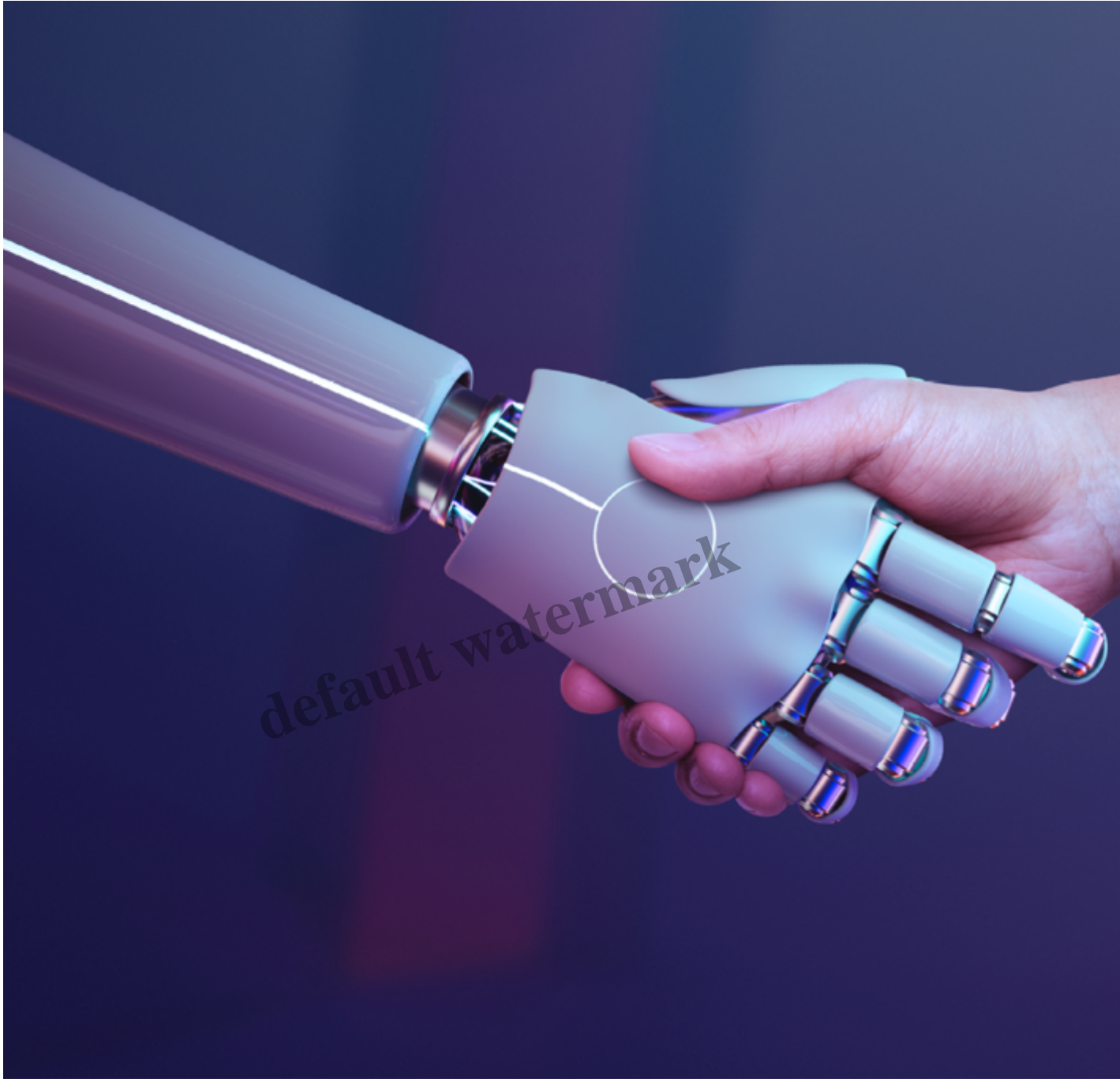
The Knowledge Management – One Mind task team were among the first to make use of our newly renovated, agile space in Phase 2.

The team came together in October for their second annual strategy session, where they celebrated past successes, reviewed current focus areas, and unpacked the future by defining the value map and customer profile. More information about these will be shared soon!

The Knowledge Management – One Mind team has been collaborating with key stakeholders to change employee lives, one product at a time. The future has big, exciting things in store – so watch this space!

The team's "why" is to create magic with playful information management solutions to build a future-fit, happy organisation.

A view on robot workers



A while ago, Tiisetso Tsiki, Senior Finance Officer: Bonitas Business Unit, wrote an article for Accountancy SA magazine in which he looked at what happens when machines, artificial intelligence or robots do not perform as envisioned.

Here is a short excerpt from the article:

“In the mid-1980s, Arnold Schwarzenegger’s *The Terminator* provided an extreme exploration of what happens when humans lose control of the intelligent machines that they themselves have developed.

“In a less extreme example, during the infancy of Google’s geolocation technology, Google Maps, it

frequently navigated travellers to the incorrect location, effectively controlling and directing humans towards a failed outcome.

“Machines, artificial intelligence or robots (bots) will always perform as instructed, but not necessarily as envisioned.

“In the rapid adoption of robotic process automation (RPA) in accounting, financial management, administration and other highly repetitive rules-based tasks, the role of the (human) resource manager is not redundant yet.”

To read the full article, download the magazine [here](#).

Category

1. Our Knowledge Centre

default watermark